

Mass flow excavation and jetting company Rotech Subsea has purchased 4 Gemini NBIs for their upcoming North Sea projects.

Survey Case Study
Inshore Survey
Fish Finding - Count of Migration Salmon

Customer Background
Prince William Sound Salmon Cooperative (PWSC) is a community-based, non-profit, research organization based on the Prince William Sound, Alaska, United States of America. Founded in 1989, it has sustained salmon with its community's cultural and economic needs. Their most important area of interest is the management of PWS and the Copper River Salmon. The Gulf of Alaska coast (the Prince William Sound) and its waters between Cape Sabine and Cape Chukchee.

The salmon fishery on the Copper River is managed in part, by an inshore area operated by the Alaska Department of Fish and Game (ADF&G) who manage Alaska's fish, game and aquatic plant resources.

Multibeam Imaging Sonar - Fish Finding
Gemini 720i provides real-time, crisp imagery of the underwater scene. It operates at 720 kHz and offers a wide 120° field-of-view.

Gemini is the ideal sonar technology for applications including obstacle avoidance and target detection in low-visibility waters. The standard Gemini software includes basic tracking capabilities which the user can choose to customize in order to detect fish and other targets.

The Need for Specialized Sonar in Salmon Fishery
ADF&G already operates 2 sonars on the Copper River where fish are counted manually by humans at intervals, at 2 frequencies (high-frequency for short-range observations and low-frequency for longer ranges).

Tritech's latest case study on fish finding demonstrates the Gemini sonar's capabilities to monitor migrating salmon at short-range.

Gemini 720is - Available in Seanet Pro



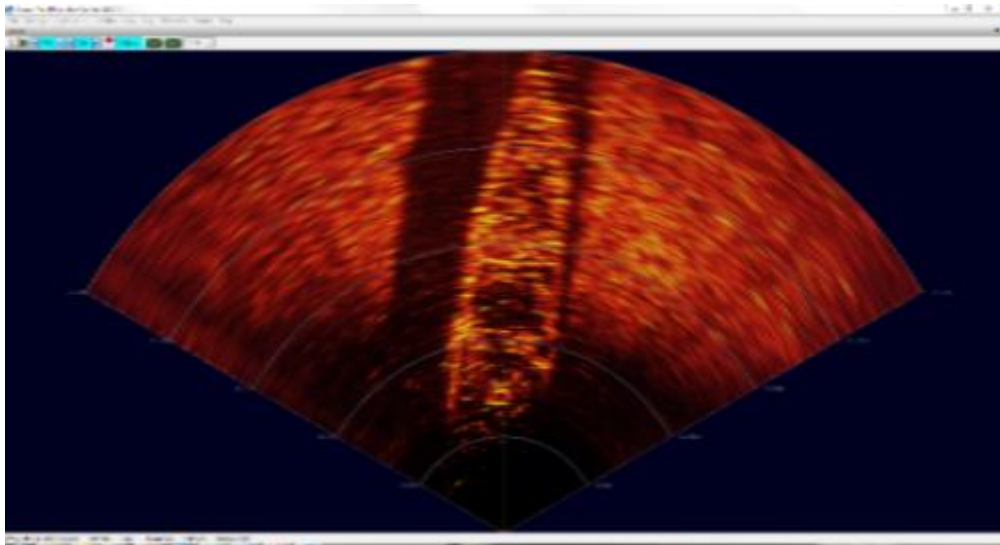
Gemini now in Seanet Pro

Launched at Oceanology, the Gemini 720i's real-time multibeam imaging sonar is now integrated into Seanet Pro, Tritech's survey data acquisition and logging software package.

Tritech Sensors Identify Historic Wreck

Tritech Sensors Uncover Wreck

Teledyne SeaBotix and the NOAA used Tritech's Gemini and MicronNav USBL combined with Seanet Pro, to successfully identify and locate a historic wreck.



Gemini sonar image of the 'Ituna' shipwreck, courtesy of Teledyne SeaBotix.

SeaHub - Remodelled for Desk or Rack Mount

SeaHub Sensor Interface Unit

Tritech's compact SeaHub unit has recently been remodelled in a rugged stainless steel housing.

It is also now available in a 19" rack mount configuration.



AquaTrak™ CVL - Featured Article



Correlation Velocity Log (CVL)

Tritech's innovative CVL has a new way of dealing with velocity requirements.

AquaTrak™ can be used for tracking subsea vehicles or station keeping and has many advantages over competing Doppler Velocity Log (DVL) technology.

Read more in this featured article.

Masters Success!

Masters in Business Administration

Maria Adams from our North American office has recently completed a Masters Degree in Business Administration from Colorado Technical University, with a concentration in Technology Management. ****Congratulations Maria!****

